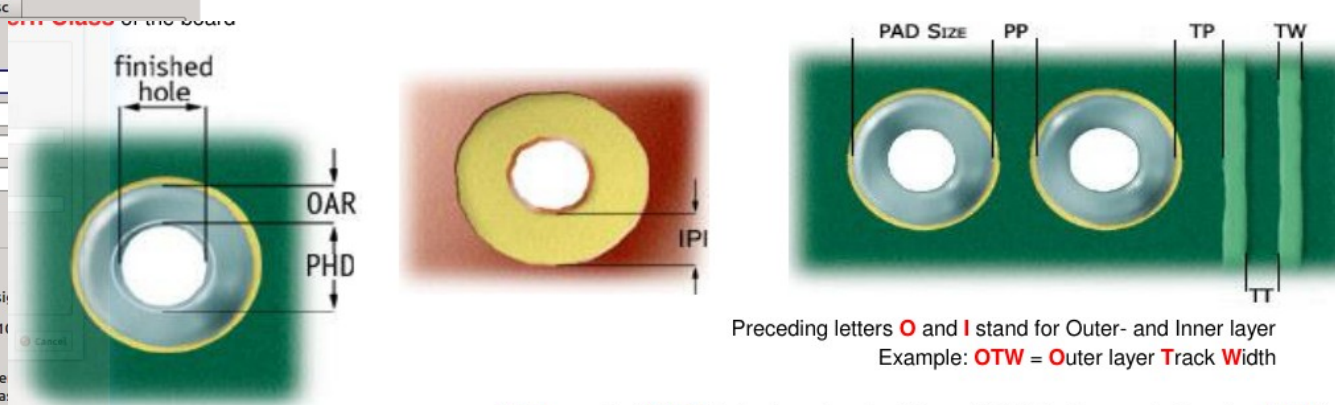
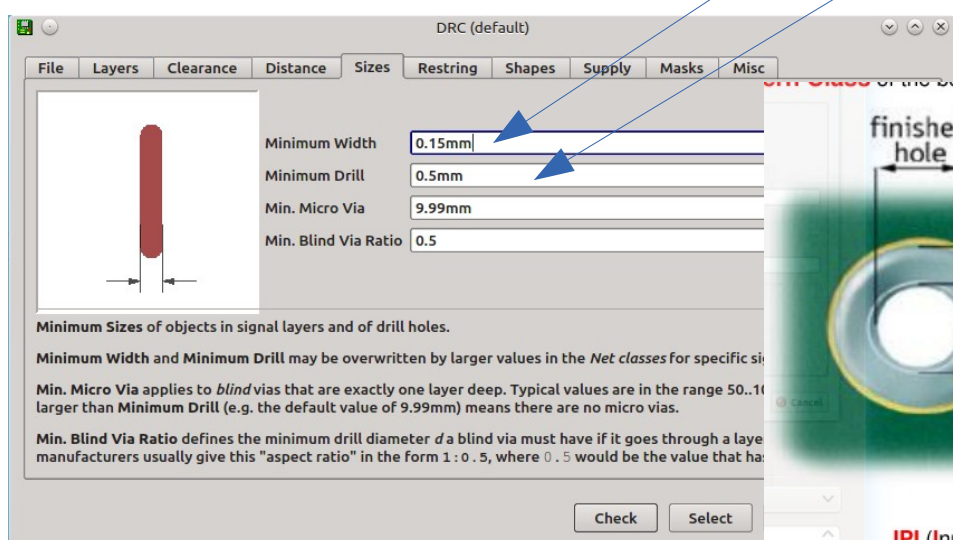


Sélecteur de classification

Classe des tracés		Classe des tracés						
	Classe C.I.	3	4	5	6	7	8	9
Largueur de trace sur couches externes (OL-TW)	0.406	≥ 0.250 mm	≥ 0.200 mm	≥ 0.175 mm	≥ 0.150 mm	≥ 0.125 mm	≥ 0.100 mm	≥ 0.090 mm
Distance d'isolation sur couches externes (OL-TT-TP-PP)	0.102	≥ 0.250 mm	≥ 0.200 mm	≥ 0.175 mm	≥ 0.150 mm	≥ 0.125 mm	≥ 0.100 mm	≥ 0.090 mm
Colerette d'anneau couches externes (OAR)	0.153	≥ 0.200 mm	≥ 0.150 mm	≥ 0.150 mm	≥ 0.125 mm	≥ 0.125 mm	≥ 0.100 mm	≥ 0.100 mm

Classe de perçage		Classe de perçage				
	Classe C.I.	A	B	C	D	E
Trou fini minimal	0.6	≥ 0.50 mm	≥ 0.35 mm	≥ 0.25 mm	≥ 0.15 mm	≥ 0.10 mm



Preceding letters **O** and **I** stand for Outer- and Inner layer  
 Example: **OTW** = Outer layer **T**rack **W**idth

**OAR** : smallest **OAR** (Outer layer Annular Ring = 1/2 (Outer layer pad diameter - PHD))  
**IAR** : smallest **IAR** (Inner layer Annular Ring = 1/2 (Inner layer pad diameter - PHD))  
**IPI** (Inner layer **P**ad **I**nsulation) : Clearance between edge **PHD** of any unconnected hole(PTH/NPTH) and any nearest copper

